



## ComfoDrive: Features, Unique selling points

- **Intuitive and integrated control of the yacht's drives**  
main engine + bow thruster + stern thruster  
**with one 3-axis joystick**

forward - backward  
sideways to the right - to the left  
rotation

- **3 ComfoDrive Joystick Options:**

a) **ComfoDrive One4All:**

**Only one single robust and ergonomic control handle (high quality, heavy weather proof),** all other "standard operating handles" of the individual drives can be omitted:

no additional handles for the main engine, the bow and the stern thrusters are needed, Operates the main engine forward - backward exactly as a standard single lever remote control:

large tilt angle:  $\pm 35^\circ$ ,

"friction brake" forward - backward:

the selected tilt angle is kept safely,

"notches" for the points of gear coupling coupled forward / off / backward

b) **ComfoDrive Harbourmode:**

Stylish, short 3-axis joystick,

tilt angle:  $\pm 20^\circ$ ,

no friction brake (if the joystick is released, the axes jump back into the 0-position),

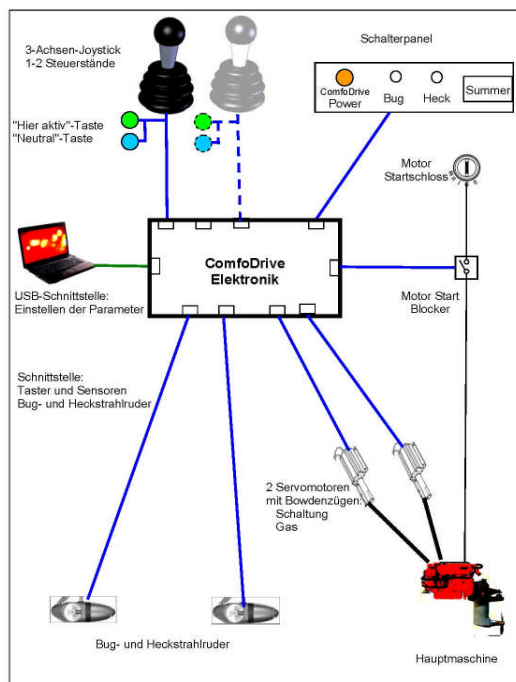
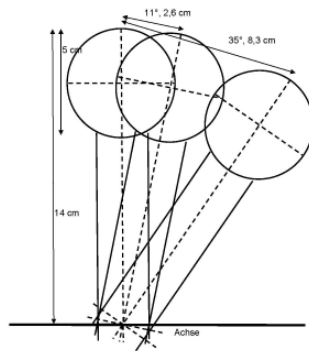
reduced maximum speed of the main machine for harbour manoeuvres,

ComfoDrive Harbourmode works (via differentials) parallel to the standard handle of the main engine

c) **ComfoDrive Remote Control:**

Small 3-axis joystick in a hand held remote device,

functions similar to ComfoDrive Harbourmode, parallel to One4All or Harbourmode as a 2<sup>nd</sup> steering position



### Dynamic Positioning

- Integrated **electronic engine remote control**

"speed" / "gear" via 2 servo motors and bowden cables (large-scale motors: fully electronically)

On request: mechanical backup via differentials

- 1 or 2 **steering positions** (if necessary, up to 4)

- **Manufacturer-independent:**

Type of yacht:

any sail or motor yacht

main engine:

one combustion engine or electric drive with remote control option

bow / stern thrusters:

any type of bow and stern thrusters (even retractable),

- **ComfoDrive electronics:** flexible and easy to parameterize via laptop and USB port

- **Easy to install and to retrofit,**

**Safety by only few interchangeable parts:**

- + stern and bow thrusters
- + ComfoDrive Joystick, switch panel
- + ComfoDrive Electronic, cable assemblies, plug&play
- + 2 servo motors, bowden cables, possibly differentials

- **"TrackAssistant"** (decimeter positioning system, "electronic mooring") as an add-on in preparation